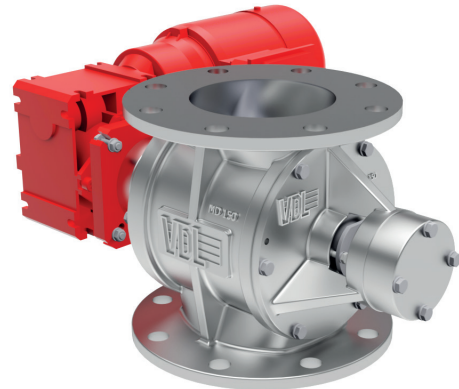


VDL Industrial Products

Part of your solution

MD dosing valve

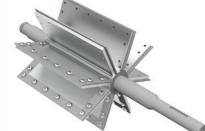
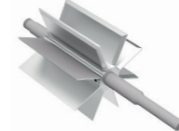
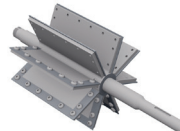
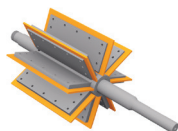
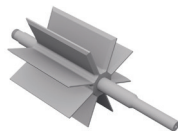
A rotary and dispenser valve that is suitable for transporting both powder and granular products. The MD series is equipped with a large inlet for an ideal filling process and low resistance, perfect for dosing. It can also be used for pneumatic transport. Its many benefits include a direct drive and an easily removable rotor, resulting in a valve that also enjoys convenient maintenance.



Properties

- External ball bearings
- Gland packings
- Can be used with differential pressures up to approx. 1 bar
- Cutting inlet
- Minimal air leakage
- This valve is equipped with standard Nord motor gearboxes (capacity 0.55 kW - 1.5 kW)
- Standard equipped with venting
- Standard cast iron house and lids
- Standard RAL color 9007
- High filling ratio
- Quick-disassembly compared to the HT(-S) version
- Flanges in accordance with DIN PN10
- MD-A version: For use in ATEX zones, our rotary valves can be delivered with EX II 1D/* *D cT4 (**2 or 3D) certification, suitable for use in either ATEX zone 21 or 22.

Rotor variants



Rotor type	1	2	3	4	5
Description	Fixed steel blades, welded and tapered	Steel/Vulkollan (PU)	Steel/steel removable tips	Stainless steel fixed blades all around tapered	Stainless steel/stainless steel removable tips

Technical information

Type	150	200	250	300
Volume capacity (Liters per revolution at a fill of 100%)	3	11	21	37
Number of rotor blades	8	8	8	8

Max. differential pressure	Operating temperature
0.05 / 0.1 bar*	-15 tot 60 °C (80 °C for metal blades)

MD-EX Version: flame proof and pressure surge-resistant

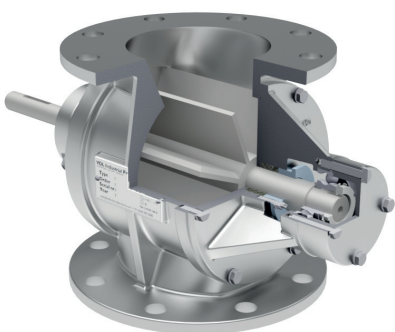
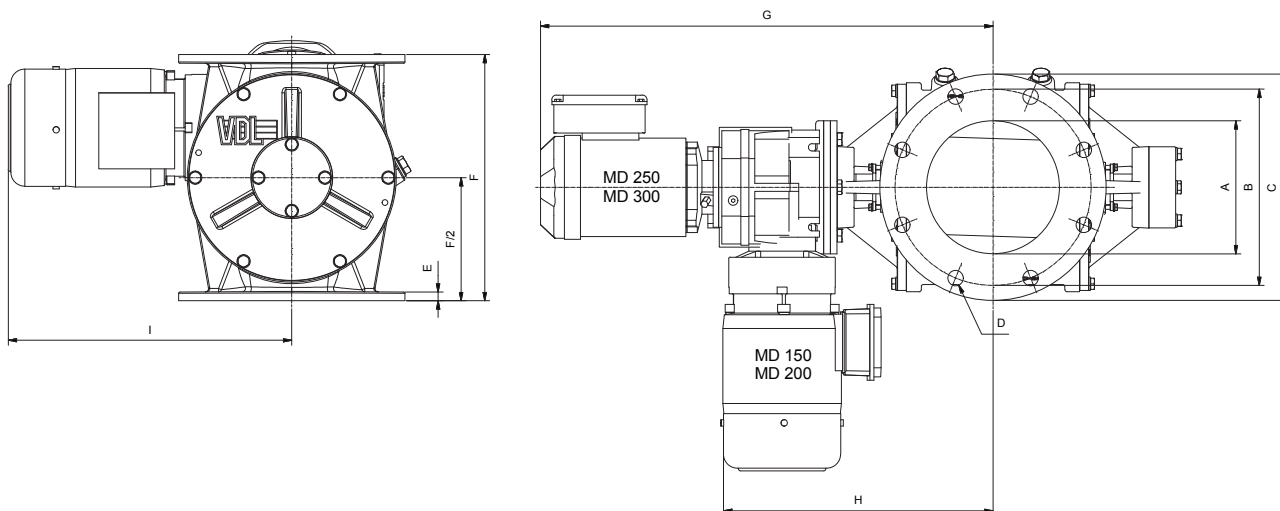
Our MD dosing valves also come in EX certified versions, for use as explosion barrier. The versions with Vulkollan (PU) rotorblades are flame-resistant and explosion proof up to 1.7 bar and the versions with steel or stainless steel rotor blades up to 2.5 bar.. Standard finish: RAL 3020.

Certification: CE0588  II 1/2 D Ex h IIB T135° Da/Db  D FSA 15 ATEX 1661/1662 X

MD dosing valve

Dimensions, speed and weight

Size (mm)										Speed (rpm)	Weight (kg)
Type	ø A	ø B	ø C	D	E	F	G	H	I		
MD150	150	240	285	8 x ø23	13	260	-	330	355	28	60
MD200	200	295	340	8 x ø23	13	370	-	400	525	29	120
MD250	250	350	395	12 x ø23	17	425	770	-	-	26	200
MD300	300	400	445	12 x ø23	20	500	840	-	-	25	240



You can find more information about our rotary valves in our catalogue

Options & accessoires

 Special Drives	 Different colours	 Hard chrome plating	 Chemical nickel plating	 Speed monitoring
 Seals and flanges	 Injectors	 Product scraper	 Air purge	More options rotor polishing teflon coating wear-resistant coating special rotor blades