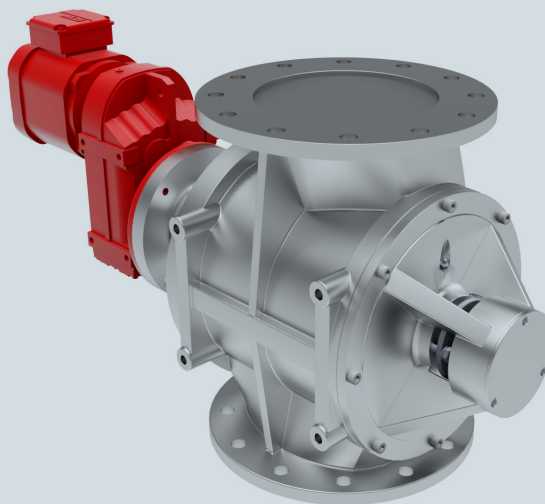




VDL INDUSTRIAL
PRODUCTS



UPR ROTARY VALVES

The UPR rotary valve has been designed to handle plastic flakes and granulates under heavy circumstances. The special shaped inlet prevents jamming of the product, and the specific external bearing construction makes handling and maintenance very efficient. Max. differential pressure: 1 bar




CHARACTERISTICS

- Standard color RAL 9001
- Many rotor varieties
- Indirect or direct drive
- Closed rotor
- Standard with cast iron housing and covers
- Standard with external supports with external ball bearings for high temperature (max. 220 °C)
- Low air-loss
- Fitted with PN 10 flanges
- ATEX version (UPR-A): CAT II 1D/* *D cT4 possible (**2 of 3D) for use in ATEX zone 21 or 22

TECHNICAL INFORMATION

Type	200	250	300
Volume capacity (liters/rev. at 100% filling ratio)	8	18	38
Rotorblades	10	10	10
Max. differential pressure	1 bar		
Standard working temperature (heat resistant types till 220 °C)	-15 up to 220 °C		

ROTOR VARIETIES

Rotor types closed on sides		
A	B	D*
		
Straight blades standard	Straight blades, with chamfered tips on top	Straight blades with exchangeable rotortips

* Exchangeable blades in hardened c72 steel, stainless steel or Vulkollan

UPR-EX VERSION:

This valve is not available as explosionproof EX version.

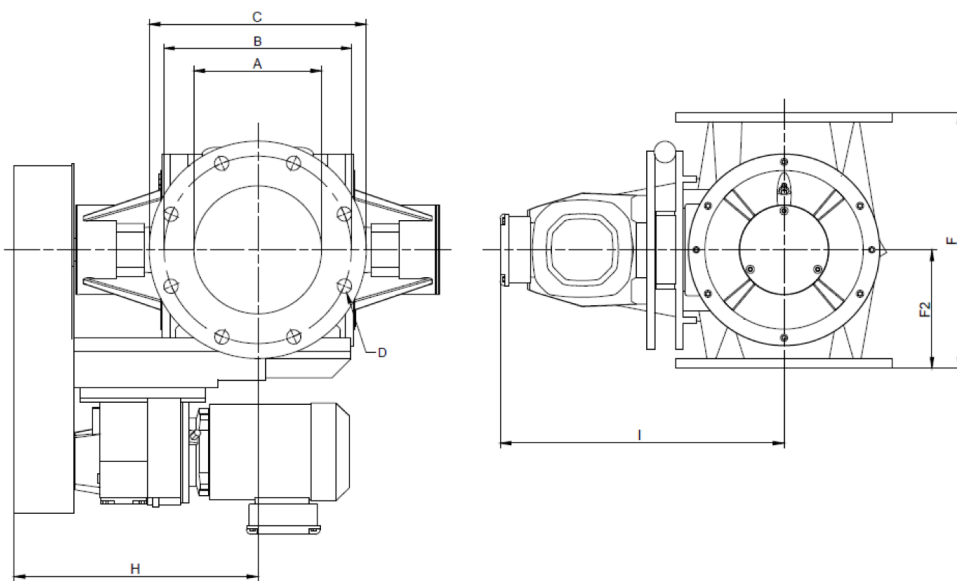
Please note our HT , HT-S , MD , RS , JK-S  and B-S  valves for EX versions.

MEASUREMENTS, RPM AND WEIGHT

Type	Measurements (mm)								RPM	Gross weight (kg)**
	øA	øB	øC	D	F	F2	H	I*		
UPR200	200	295	340	8x ø 22	400	185	388	473	15 till 32	165
UPR250	250	350	405	12x ø 22	500	225	416	513	15 till 32	240
UPR300	300	400	445	12x ø 22	635	285	460	589	15 till 32	334

* depending on drive

** with chain transmission



More information on our other valves can be found in our **catalogue Rotary valves**

OPTIONS AND ACCESSORIES



Housing treatments



Rotor treatments



Air purge



Revolution control



Injector

Others:

- Different RAL colour
- Nickel plating
- Chroming plating
- Polishing (SS only)