

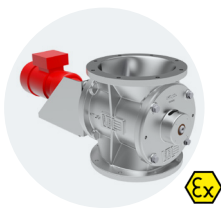


VDL INDUSTRIAL  
PRODUCTS



# ROTARY VALVES

## TYPE HT



**Valve type**  
**Connection flanges**  
**Rotorvolume**  
**Body and cover**  
**Rotor**  
**Rotor blades**  
**Bearings and shaft seal**  
**Maximum pressure difference**

Airlock  
DN 250 - DN 420  
7 to 35 litres  
Cast iron, optional nickel or chromium plated  
Steel or stainless steel  
Spring steel, stainless steel, nylon or Vulkollan  
External bronze plain bearings with felt- and sealings  
0.05 bar (with 6 chambers), 0.1 bar (with 8 chambers)

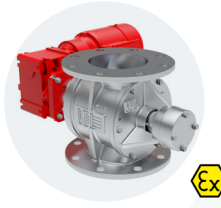
## TYPE HT-S



**Valve type**  
**Connection flanges**  
**Rotorvolume**  
**Body and cover**  
**Rotor**  
**Rotor blades**  
**Bearings and shaft seal**  
**Maximum pressure difference**

Airlock  
DN 250 - DN 340  
7 to 20 litres  
Cast iron, optional nickel or chromium plated  
Steel or stainless steel  
Steel, stainless steel or Vulkollan  
External maintenance-free ball bearings with gland packings  
0.4 bar

## TYPE MD



**Valve type**  
**Connection flanges**  
**Rotorvolume**  
**Body and cover**  
**Rotor**  
**Rotor blades**  
**Bearings and shaft seal**  
**Maximum pressure difference**

Dosing valve  
DN 150 - DN 300  
3 to 37 litres  
Cast iron, optional nickel or chromium plated  
Steel or stainless steel  
Steel, stainless steel or Vulkollan  
External maintenance-free ball bearings with gland packings  
1 bar

## TYPE SMD



**Valve type**  
**Connection flanges**  
**Rotorvolume**  
**Body and cover**  
**Rotor**  
**Rotor blades**  
**Bearings and shaft seal**  
**Maximum pressure difference**

Stainless steel dosing valve  
DN 150 - DN 300  
3 to 37 litres  
AISI 316  
AISI 316  
AISI 316  
External maintenance-free ball bearings with gland packings  
1 bar

### EX VERSION: FLAMEPROOF AND PRESSURE SURGE-RESISTANT

These rotary valves can also be supplied in a certified version for explosion isolation. Standard color RAL 3020.

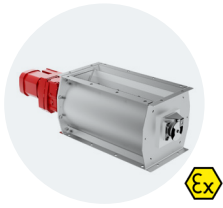
**Types HT | HT-S | MD:** Pressure surge-resistant and flameproof up to 1.7 bar (Vulkollan blades) or 2.5 bar (steel blades).

Available as a protection system with certificate number: CE<sub>0588</sub> Ex II 1/2 D Ex h III B T135° Da/Db Ex D FSA 15 ATEX 1661/1662 X

**Types JK-S | B-S:** These versions are flameproof and pressure surge-resistant up to 0.5 bar, ATEX EX II 1D.

CE<sub>1073</sub> Ex II 1/2 D Ex h III B T 120° Db/Dc Ex FSA 08 ATEX 1586 and FSA 15 ATEX 1658X.

## TYPE JK-S/B-S



**Valve type**  
**Connection flanges**  
**Rotor volume**  
**Body and cover**  
**Rotor**  
**Rotor blades**  
**Bearings and shaft seal**  
**Maximum pressure difference**

Drop through valve  
220x250 - 500x1500  
17 to 360 litres  
Steel or AISI 304  
Sheet metal, steel or AISI 304  
Various plastic/rubber blades  
Flange bearings  
0.07 bar

## SEVERAL OPTIONS

- Quickly dismountable Easy Clean versions (also with slide)
- Heat resistant versions
- ATEX versions
- Special surface treatments for rotor and body (non-stick coating or lifetime extension)
- Food grade versions
- Air purge
- Speed monitoring
- Different colours
- Special production on request

More information  
in our catalogue  
**Rotary valves &  
Vibration Technology**