

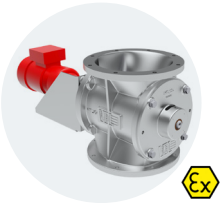


VDL INDUSTRIAL  
PRODUCTS



## ROTARY VALVES

### TYPE HT



**Valve type**  
**Connection flanges**  
**Rotorvolume**  
**Body and cover**  
**Rotor**  
**Rotor blades**  
**Bearings and shaft seal**  
**Maximum pressure difference**

Airlock  
DN 250 - DN 420  
7 to 35 litres  
Cast iron, optional nickel or chromium plated  
Steel or stainless steel  
Spring steel, stainless steel, nylon or Vulkollan (PU)  
External bronze plain bearings with felt- and sealings  
0.05 bar (with 6 chambers), 0.1 bar (with 8 chambers)

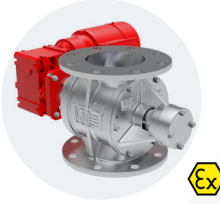
### TYPE HT-S



**Valve type**  
**Connection flanges**  
**Rotorvolume**  
**Body and cover**  
**Rotor**  
**Rotor blades**  
**Bearings and shaft seal**  
**Maximum pressure difference**

Airlock  
DN 250 - DN 340  
7 to 20 litres  
Cast iron, optional nickel or chromium plated  
Steel or stainless steel  
Steel, stainless steel or Vulkollan (PU)  
External maintenance-free ball bearings with gland packings  
0.4 bar

### TYPE MD



**Valve type**  
**Connection flanges**  
**Rotorvolume**  
**Body and cover**  
**Rotor**  
**Rotor blades**  
**Bearings and shaft seal**  
**Maximum pressure difference**

Dosing valve  
DN 150 - DN 300  
3 to 37 litres  
Cast iron, optional nickel or chromium plated  
Steel or stainless steel  
Steel, stainless steel or Vulkollan (PU)  
External maintenance-free ball bearings with gland packings  
1 bar

### TYPE SMD



**Valve type**  
**Connection flanges**  
**Rotorvolume**  
**Body and cover**  
**Rotor**  
**Rotor blades**  
**Bearings and shaft seal**  
**Maximum pressure difference**

Stainless steel dosing valve  
DN 150 - DN 300  
3 to 37 litres  
AISI 316  
AISI 316  
AISI 316  
External maintenance-free ball bearings with gland packings  
1 bar

### EX VERSION: FLAMEPROOF AND PRESSURE SURGE-RESISTANT

These rotary valves can also be supplied in a certified version for explosion isolation. Standard color RAL 3020.

**Types HT | HT-S | MD:** Pressure surge-resistant and flameproof up to 1.7 bar (Vulkollan blades) or 2.5 bar (steel blades).

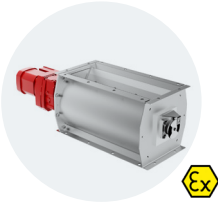
Available as a protection system with certificate number: CE<sub>0588</sub> Ex II 1/2 D Ex h III B T135° Da/Db Ex D FSA 15 ATEX 1661/1662 X

**Type RS:** Pressure surge-resistant and flameproof up to max. 10 bar ATEX EX II1D (zone 20). Available as protection system: IB Ex U07ATEX2029 X

**Types JK-S | B-S:** These versions are flameproof and pressure surge-resistant up to 0.5 bar, ATEX EX II 1D.

CE<sub>1073</sub> Ex II 1/2 D Ex h III B T 120° Db/Dc Ex FSA 08 ATEX 1586 and FSA 15 ATEX 1658X.

## TYPE JK-S/B-S



**Valve type**  
**Connection flanges**  
**Rotor volume**  
**Body and cover**  
**Rotor**  
**Rotor blades**  
**Bearings and shaft seal**  
**Maximum pressure difference**

Drop through valve  
220x250 - 500x1500  
17 to 360 litres  
Steel or AISI 304  
Sheet metal, steel or AISI 304  
Various plastic/rubber blades  
Flange bearings  
0.07 bar

## TYPE VPS



**Valve type**  
**Connection flanges**  
**Rotor volume**  
**Body and cover**  
**Rotor**  
**Rotor blades**  
**Bearings and shaft seal**  
**Maximum pressure difference**

Dosing valve  
DN 180 - DN 400  
2 to 40 litres  
Cast iron or AISI 316, various treatments possible  
Steel, AISI 304 or AISI 316  
Steel, stainless steel or Vulkollan (PU)  
Ball bearings, optional expanded bearings and gland packings  
0.25 bar

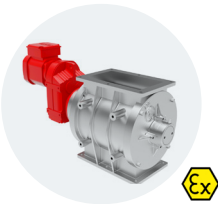
## TYPE VPR



**Valve type**  
**Connection flanges**  
**Rotor volume**  
**Body and cover**  
**Rotor**  
**Rotor blades**  
**Bearings and shaft seal**  
**Maximum pressure difference**

Dosing valve  
DN 100 - DN 400  
0.45 to 45 litres  
Cast iron or AISI 316, various treatments possible  
Steel, AISI 304 or AISI 316  
Steel, stainless steel or Vulkollan (PU)  
Ball bearings, optional expanded bearings and gland packings  
1 bar

## TYPE RS



**Valve type**  
**Connection flanges**  
**Rotor volume**  
**Body and cover**  
**Rotor**  
**Rotor blades**  
**Bearings and shaft seal**  
**Maximum pressure difference**

Dosing and drop through valve  
155x105 - 635x356  
2 to 120 litres  
Cast iron or AISI 316, various treatments possible  
Steel, AISI 304 or AISI 316  
Steel, stainless steel or Vulkollan (PU)  
Ball bearings, optional expanded bearings and gland packings  
1 bar

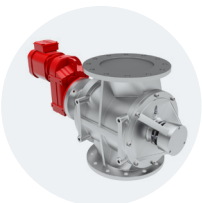
## TYPE SF



**Valve type**  
**Connection flanges**  
**Rotor volume**  
**Body and cover**  
**Rotor**  
**Rotor blades**  
**Bearings and shaft seal**  
**Maximum pressure difference**

Blow through valve  
155x105 - 635x356  
2 to 120 litres  
Cast iron or AISI 316, various treatments possible  
Steel, AISI 304 or AISI 316  
Steel, stainless steel or Vulkollan (PU)  
Ball bearings, optional expanded bearings and gland packings  
1 bar

## TYPE UPR



**Valve type**  
**Connection flanges**  
**Rotor volume**  
**Body and cover**  
**Rotor**  
**Rotor blades**  
**Bearings and shaft seal**  
**Maximum pressure difference**

Drop through valve for granulates  
DN 200 - DN 300  
8 to 38 litres  
Cast iron, various treatments possible  
Steel or AISI 304  
Steel or stainless steel  
External ball bearings and gland packings  
1 bar

## SEVERAL OPTIONS

- Quickly dismountable Easy Clean versions (also with slide)
- Heat resistant versions
- ATEX versions
- Special surface treatments for rotor and body (non-stick coating or lifetime extension)
- Food grade versions
- Air purge
- Speed monitoring
- Different colours
- Special production on request

MORE INFORMATION  
IN OUR CATALOGUE  
**ROTARY VALVES**