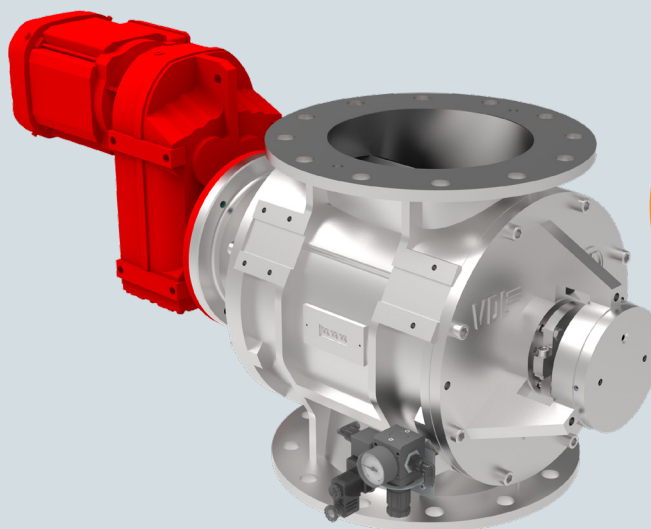




VDL INDUSTRIAL
PRODUCTS



FOOD GRADE
HYGIENIC AND
SUITABLE FOR
FOOD

MD-S DOSING VALVES

Drop-through and dosing valve suitable for transporting both powdered and granular products. This valve is specially designed for the pharmaceutical, chemical and food industries (EHEDG compliant). The MD series features a large inlet for optimal filling and low resistance, ideal for dosing. Also very suitable for pneumatic transport. Thanks to the different rotor designs, a wide range of products can be handled well. The direct drive and a glandpacking for the shaft seal result in a maintenance-friendly and reliable valve.


PROPERTIES

- External maintenance-free ball bearings
- Gland packings
- Can be used with differential pressures up to approx. 1 bar
- Cutting inlet
- Minimal air leakage
- These valve is equipped with standard Nord motor gearboxes (capacity 0.55 kW – 1.5 kW)
- Standard equipped with venting
- AISI 316 body and cover
- High filling ratio
- Flanges in accordance with DIN PN10

TECHNICAL INFORMATION

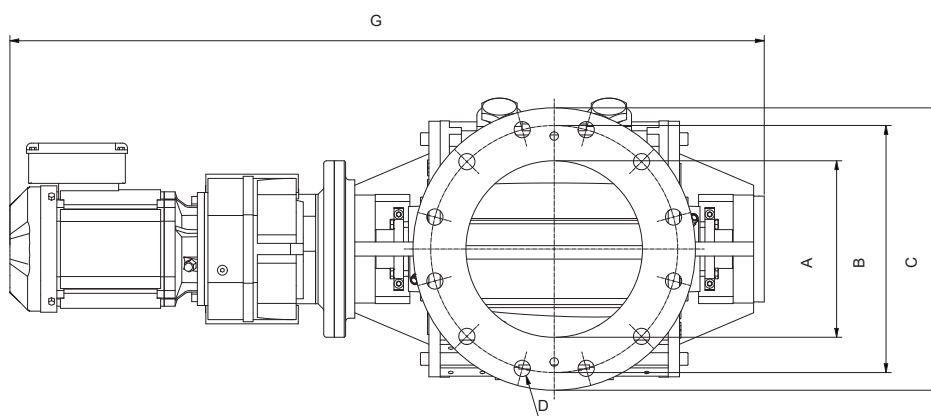
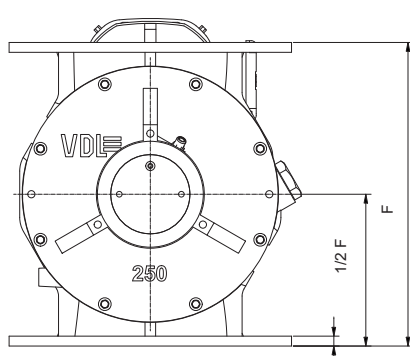
| Type | 150-S | 200-S | 250-S | 300-S |
|---|-----------------|-------|-------|-------|
| Volume capacity (litres per revolution at a fill of 100%) | 3 | 11 | 20 | 37 |
| Number of rotor blades | 8 | 8 | 8 | 8 |
| Max. differential pressure | 1 bar | | | |
| Operating temperature | -15 up to 60 °C | | | |

ROTOR VARIANTS

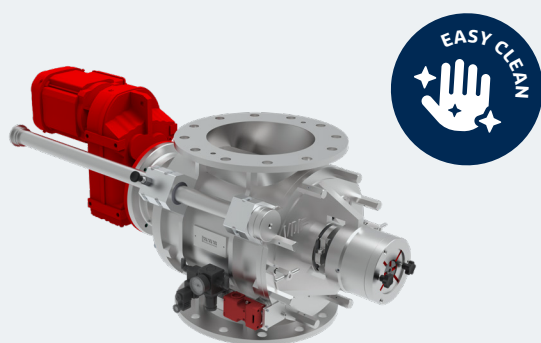
| Rotor types |
|---|
| C |
|  |
| Stainless steel fixed blades tapered all around |

DIMENSIONS, SPEED AND WEIGHT

| Type | Sizes (mm) | | | | | | Speed (rpm) | Total weight (kg) |
|--------|------------|-----|-----|----------|-----|------|-------------|-------------------|
| | Ø A | Ø B | Ø C | D | F | G | | |
| MD150S | 150 | 240 | 285 | 8 x Ø23 | 260 | 840 | 28 | 60 |
| MD200S | 200 | 295 | 340 | 8 x Ø23 | 370 | 956 | 29 | 120 |
| MD250S | 250 | 350 | 395 | 12 x Ø23 | 430 | 1069 | 26 | 200 |
| MD300S | 300 | 400 | 445 | 12 x Ø23 | 500 | 1242 | 25 | 240 |

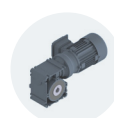


DISCOVER THE NEW SMD: A STAINLESS STEEL EASY CLEAN VERSION

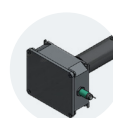


The SMD Easy Clean valve has high cleaning efficiency, as the rotor can be removed easily and replaced without tools. The rotary valve has a stainless steel AISI316 body and rotor and is suitable for foodstuffs, for example.

OPTIONS AND ACCESSORIES



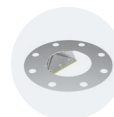
Special drives



Speed monitoring



Seals & flanges



Stainless steel product scrapers



Air purge



Injectors

More options:

- Rotor polishing