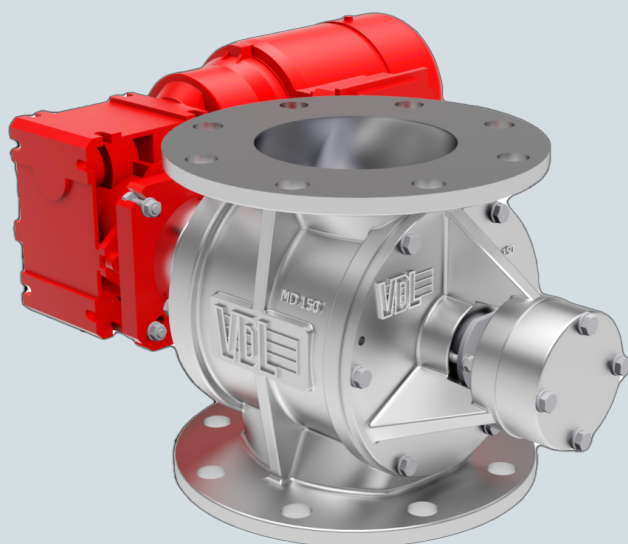




VDL INDUSTRIAL PRODUCTS



Can be used for pressure differentials up to approx. 1 bar

MD DOSING VALVES

A rotary and dosing valve that is suitable for transporting both powder and granular products. The MD series is equipped with a large inlet for an ideal filling process and low resistance so perfect for dosing. It can also be used for pneumatic transport. Its many benefits include a direct drive and an easily removable rotor, resulting in a valve that also enjoys convenient maintenance.

PROPERTIES

- External maintenance-free ball bearings
- Gland packings
- Can be used with differential pressures up to approx. 1 bar
- Cutting inlet
- Minimal air leakage
- The valve is equipped with standard Nord motor gearboxes (capacity 0.55 kW – 1.5 kW)
- Standard equipped with venting
- Standard cast iron house and cover
- Standard RAL color 9007
- High filling ratio
- Quick-disassembly compared to the HT(S) version
- Flanges in accordance with DIN PN10
- MD-A version: For use in ATEX zones, our rotary valves can be delivered with EX II 1D/* *D cT4 (**2 or 3D) certification, suitable for use in either ATEX zone 21 or 22.

TECHNICAL INFORMATION

Type	150	200	250	300
Volume capacity (litres per revolution at a fill of 100%)	3	11	21	37
Number of rotor blades	8	8	8	8
Max. differential pressure	1 bar			
Operating temperature	-15 up to 60 °C (80 °C for metal blades)			

ROTOR VARIANTS

Rotor types				
1	2	3	4	5
Fixed steel blades, welded and tapered	Steel / Vulkollan (PU) removable blades	Steel / steel removable tips	Stainless steel fixed blades all around tapered	Stainless steel / stainless steel removable tips

MD-EX VERSION: FLAME PROOF AND PRESSURE SURGE-RESISTANT

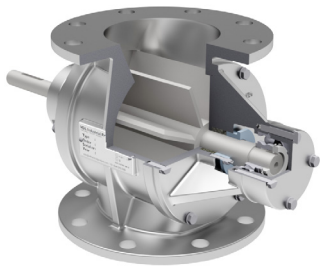
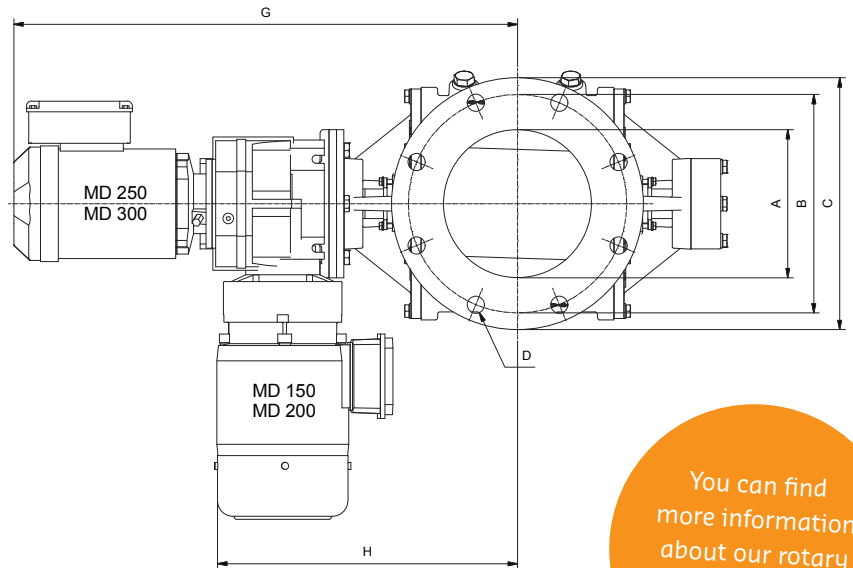
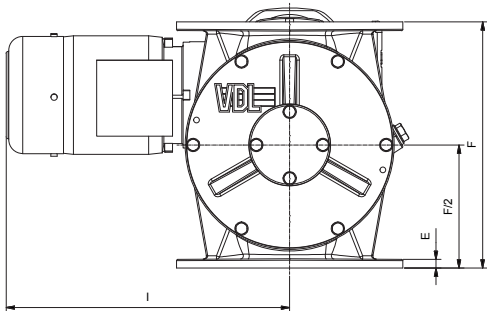
Our MD dosing valves also come in EX certified versions, for use as explosion barrier. The versions with Vulkollan (PU) rotorblades are flame-resistant and explosion proof up to 1.7 bar and the versions with steel or stainless steel rotor blades up to 2.5 bar.

Standard finish: RAL 3020.

Certification: CE₀₅₈₈ II 1/2 D Ex h IIB T135° | Da/Db D FSA 15 ATEX 1661/1662 X

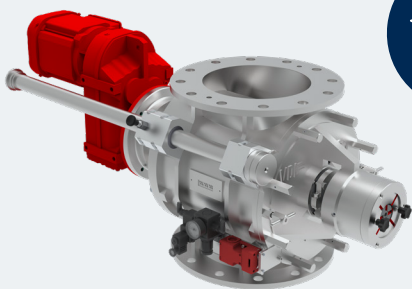
DIMENSIONS, SPEED AND WEIGHT

Type	Sizes (mm)									Speed (rpm)	Total weight (kg)
	Ø A	Ø B	Ø C	D	E	F	G	H	I		
MD150	150	240	285	8 x Ø23	13	260	-	330	355	28	60
MD200	200	295	340	8 x Ø23	13	370	-	400	525	29	120
MD250	250	350	395	12 x Ø23	17	425	770	-	-	26	200
MD300	300	400	445	12 x Ø23	20	500	840	-	-	25	240



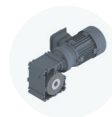
You can find more information about our rotary valves in our catalogue

DISCOVER THE NEW SMD: A STAINLESS STEEL EASY CLEAN VERSION



The SMD Easy Clean valve has high cleaning efficiency, as the rotor can be removed easily and replaced without tools. The valve has a stainless steel body and is suitable for foodstuffs, for example. The AISI 316 cast rotor is one-piece with a stainless steel slide with aluminium bearing housings. See our **Stainless steel SMD product sheet** for more information.

OPTIONS AND ACCESSORIES



Special drives



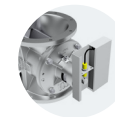
Different colours



Hard chrome plating



Chemical nickel plating



Speed monitoring



Seals & flanges



Product scraper



Air purge



Injector

More options:

- Rotor polishing
- Teflon coatings
- Wear-resistant coatings
- Special rotor blades