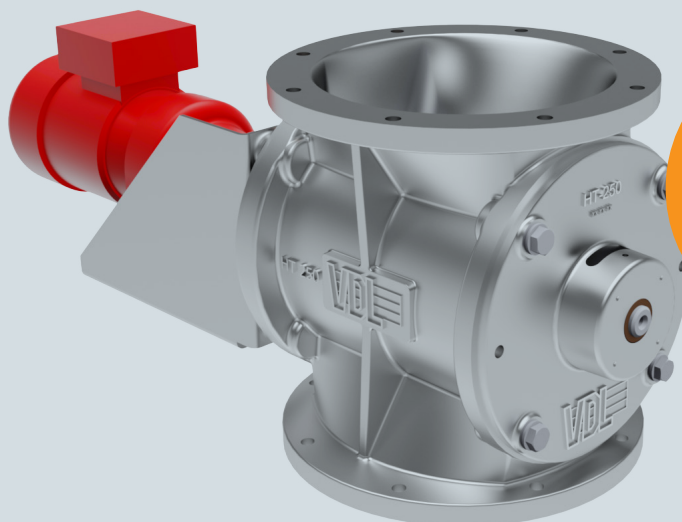




VDL INDUSTRIAL PRODUCTS



Also available in a heat resistant version (HB) up to 200 °C

HT ROTARY VALVES

A rotary valve suitability for use as an air lock under filters and cyclones, as well as for light dosing applications for powders and granules using screw conveyors, weighers, dryers and coolers. This valve is very economical thanks to its simple and robust construction.

PROPERTIES

- Modular concept with numerous rotor variants
- Maintenance-free sliding bearings (HT450 with ball bearings)
- Standard color RAL 5009
- Can be used with different pressures up to 0.05 bar (executions with 8 blades up to 0.1 bar)
- HT250/350 interchangeable with HT-S
- This valve range is fitted with a Nord gear motor (0.37kW – 1.1kW) as standard
- Many available options
- Standard cast iron house and covers

- HT-A version: for use in ATEX zones, our rotary valves can be delivered with CAT II 1D/* *D cT4 (**2 of 3D) certification. Suitable for use in either ATEX zone 21 or 22.

TECHNICAL INFORMATION

Type	250	350	450
Volume capacity (liters per revolution at a fill level of 100%)	7	20	35
Number of rotor blades	6 or 8	6 or 8	8
Max. differential pressure	0.05 / 0.1 bar*		
Operating temperature	-15 to 60 °C (80 °C for metal blades)		

* in case of 8 rotor blades

ROTOR VARIANTS

Rotortypes					
1	2	3	4	5	6
Steel / Nylon	Steel / Vulkollan (PU)	Steel / Spring steel*	Stainless steel 304 / Vulkollan (PU)	Stainless steel 304 / Stainless steel 304	Steel / Vulkollan (PU) 4 mm (8 blades)

All blades are removable
*Steel for the HT450 (8 blades)

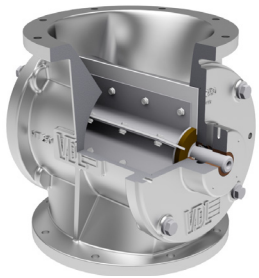
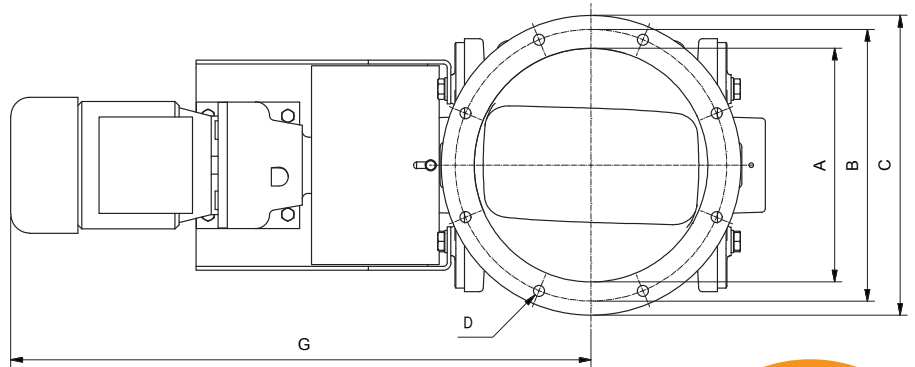
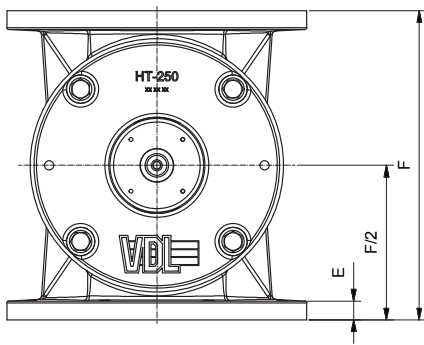
HT-EX VERSION: FLAME PROOF AND PRESSURE SURGE-RESISTANT

Our HT rotary valves also come in EX certified versions, for use as explosion barrier. The versions with Vulkollan (PU) rotorblades are flame-resistant and explosion proof up to 1.7 bar. Standard color: RAL 3020.

Certification: CE₀₅₈₈ II 1/2 D Ex h IIB T135° | Da/Db D FSA 15 ATEX 1661/1662 X

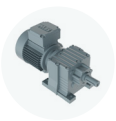
SIZES, SPEED AND WEIGHT

Type	Sizes (mm)							Speed (rpm)	Total weight (kg)
	Ø A	Ø B	Ø C	D	E	F	G		
HT250	250	290	320	8 x Ø12	20	330	620	31	80
HT350	340	390	420	8 x Ø12	20	400	670	31	115
HT450	420	490	525	8 x Ø12	20	500	850	26	220



You can find more information about our rotary valves in our catalogue

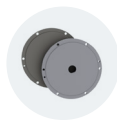
OPTIONS AND ACCESSORIES



Special drives



Different colours



Hard chrome plating



Chemical nickel plating



Speed monitoring



Seals & flanges



Product scraper



Insulation box

More options:

- Rotor polishing
- Teflon coatings
- Wear-resistant coatings
- Special rotorblades