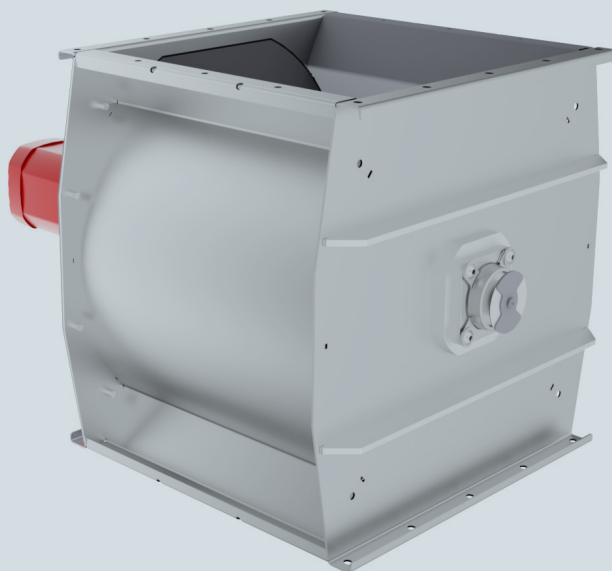




VDL INDUSTRIAL
PRODUCTS



B-S ROTARY VALVES

These sheet steel valves are designed f.e. for specific needs of the wood industry. These valves combine high capacity with excellent tightness, and are therefore ideally suited and can be easily connected to the most commonly used filter systems



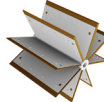
PROPERTIES

- Comes standard with neoprene blades
- Also available with silicone blades (max. 250 °C) or PU blades
- Direct drive with flange motor
- Standard color RAL 5010
- Can be used for pressure differences up to 0.07 bar
- Standard steel house and covers
- Many available options
- B-S-A version: for use in ATEX zones, internal ATEX approved, however not external ATEX approved

TECHNICAL INFORMATION

Type	500	750	1000	1500
Volume capacity (liters per revolution at a fill level of 100%)	120	180	240	360
Number of rotor blades	8	8	8	8
Max. differential pressure	0.07 bar			
Operating temperature	-25 to 65 °C			

ROTOR TYPES

Rotor types		
1	2	3
		
Neoprene rubber (standard)	Silicone (at request)	Vulkollan (PU) (at request)

B-S-EX VERSION: FLAME PROOF AND PRESSURE SURGE-RESISTANT

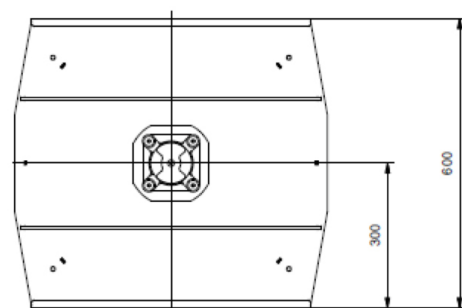
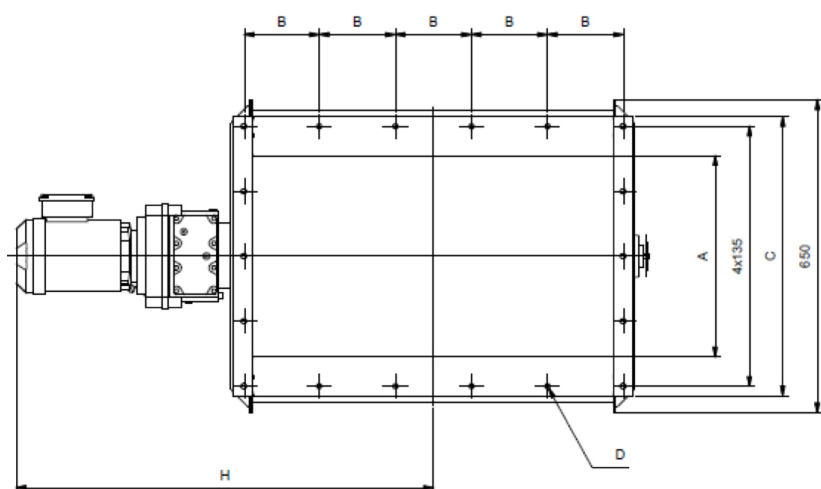
Type B-S valves can also be supplied in a certified version for use as an explosion barrier.

These versions are flame-resistant and pressure resistant up to 0.5 bar, ATEX EX II 1D.

Available as explosion-proof insulation: CE₁₀₇₃  II 1/2 D Ex h IIIB T 120° Db/Dc  FSA 08 ATEX 1586 and FSA 15 ATEX 1658X

DIMENSIONS AND WEIGHT

Type	Sizes (mm)					Speed (rpm)	Total weight (kg)
	A	B	C	D	H		
B-500(EX)S	500x500	4x135	580x580	16 x Ø10.5	742	16	140
B-750(EX)S	500x750	5x158	580x830	12 x Ø10.5	867	16	185
B-1000(EX)S	500x1000	8x130	580x1080	14 x Ø10.5	997	16	260
B-1500(EX)S	500x1500	12x130	580x1580	18 x Ø10.5	1046	16	410



You can find more information in our rotary valves catalogue

OPTIONS AND ACCESSORIES



Speed monitoring



Injector



Different color

More options:

- House and rotor in SS 304 and 316