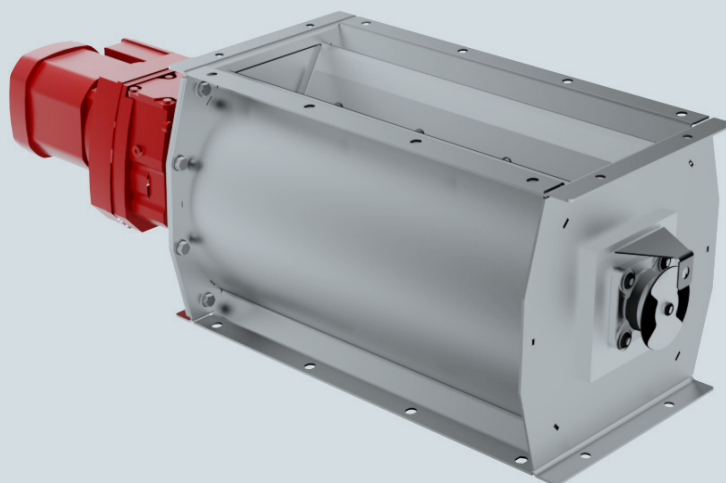




VDL INDUSTRIAL
PRODUCTS



JK-S ROTARY VALVES

These sheet steel valves are designed f.e. for specific needs of the wood industry. These valves combine high capacity with excellent tightness, and are therefore ideally suited and can be easily connected to the most commonly used filter systems.

PROPERTIES

- Comes standard with neoprene blades
- Also available with silicone blades (max. 250 °C) or PU blades
- Direct drive with flange motor
- Standard color RAL 5010
- Can be used for pressure differences up to 0.07 bar
- Standard steel house and covers
- Many available options
- JK-S-A version: for use in ATEX zones, internal ATEX approved, however not external ATEX approved

TECHNICAL INFORMATION

Type	25	50	75	100	150	200
Volume capacity (liters per revolution at a fill level of 100%)	17	33	53	70	105	138
Number of rotor blades	6	6	6	6	6	6
Max. differential pressure	0.07 bar					
Operating temperature	-25 to 65 °C					

ROTOR TYPES

Rotor types		
1	2	3
Neoprene rubber (standard)	Silicone (at request)	Vulkollan (PU) (at request)

JK-S-EX VERSION: FLAME PROOF AND PRESSURE SURGE-RESISTANT

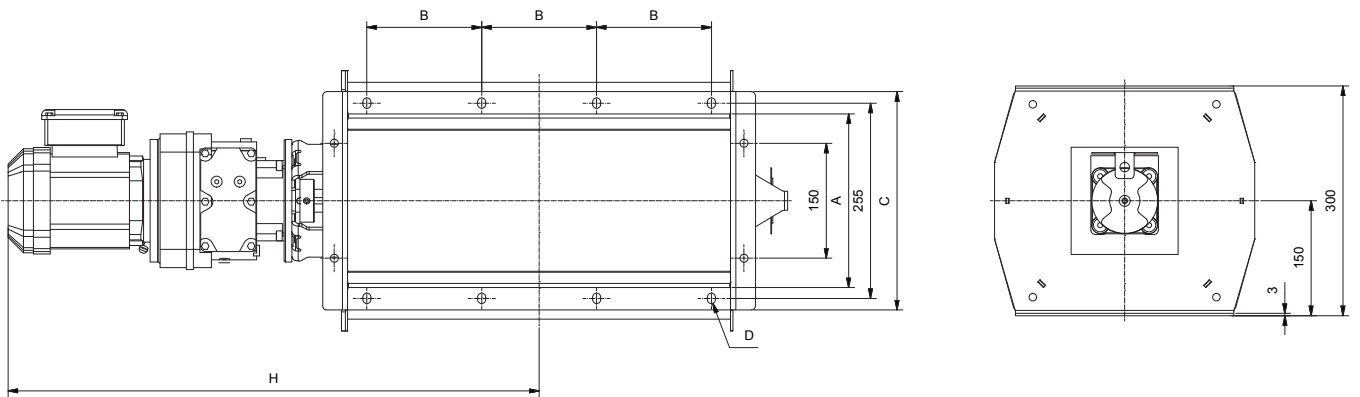
Type JK-S valves can also be supplied in a certified version for use as an explosion barrier.

These versions are flame-resistant and pressure resistant up to 0.5 bar, ATEX EX II 1D.

Available as explosion-proof insulation: CE₁₀₇₃ II 1/2 D Ex h IIIB T 120° Db/Dc FSA 08 ATEX 1586 and FSA 15 ATEX 1658X

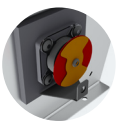
DIMENSIONS AND WEIGHT

Type	Sizes (mm)					Speed (rpm)	Total weight (kg)
	A	B	C	D	H		
JK-25(EX)S	220x250	150	285x315	8 x Ø10.5	585	20	45
JK-50(EX)S	220x500	150 (3x)	285x565	12 x Ø10.5	710	20	65
JK-75(EX)S	220x750	150 (4x)	285x815	14 x Ø10.5	835	20	80
JK-100(EX)S	220x1000	150 (6x)	285x1065	18 x Ø10.5	990	20	90
JK-150S	220x1500	150 (9)	285x1565	24 x Ø10.5	1240	20	120
JK-200S	220x2000	150 (13x)	285x2065	32 x Ø10.5	1490	20	165



You can find more information in our rotary valves catalogue

OPTIONS AND ACCESSORIES



Speed monitoring



Injector



Different color

More options:

- House and rotor in SS 304 and 316